



A Weekly Update
For The Employees of
North Central Health Care



NEWS YOU CAN USE



WEEKLY CONNECTION WITH JENNIFER PEASLEE

Exciting News: Programs Relocating to New Office Spaces!

Get ready for a positive change! This week, many programs are moving to a new office space, marking an important milestone in our journey. Over the last many years, we've all been eagerly anticipating these changes and I've been amazed at the many examples of partnership and collaboration I've personally witnessed to make this happen; both currently and in the past with programs that have already moved.

Here's one example of just that-the Health Information Team, (pictured below), they boxed over 500 boxes of medical records in anticipation for the move-that's a lot of boxes! I'm so impressed by their hard work and commitment to making sure that our patients/clients/residents' records are secured and stored appropriately. It's also an important reminder to all of us-as you're moving spaces, please make sure that you're protecting any protected health information by keeping it secured and not leaving any behind. This is one way we show dignity to those we serve.



As we near the end of all of our moves, let's remember that it's not just about relocating physically – it's about embracing a fresh chapter in our organization's growth story. Thank you for your continued dedication and hard work. Together, we're shaping a brighter future for our teams and the incredible work we do. I'm excited about this new chapter and appreciate your dedication. Let's look forward to a brighter, more inspiring workspace!!

Jennifer Peaslee

Jennifer Peaslee
Compliance Office



Occurrence Reporting Hotline

x4488 or 715.848.4488

Only significant or sentinel events requiring immediate notification to this hotline.

- Granite Grinding? 2
- Hard Hat Updates 3
- Learning & Development
- Reminders 4
- Foodie Forecast 6-7
- UKG Wallet 8



Dawn Kayhart, CNA, Pine Crest

Thank you for all your hard work. It's nice working with you!!

From: Nicole Schaetzl





PHOTOS OF THE WEEK



WAUSAU CAMPUS NOISE ALERT

This is Granite Grinding!

Beginning Monday, August 14, the Wausau Campus will be experiencing loud noises from additional demolition work taking place in the former Gardenside building area on the rear side of Campus, near Lot H. The concrete "mountain" that is currently located in front of the new Crisis Center entrance will be crushed on-site down to small pieces. This process is extremely loud. Additionally, on Tuesday, August 22, additional loud noises from the work being done with the Laundry/Tunnel area. This will sound like steam being let out from a pipe and will also be extremely loud. Both projects are anticipated to last approximately 2 weeks, and resume daily around 7:00 am.

Please take time to inform residents, visitors and staff so that we can provide the best Person-Centered Service during the renovations and our teams can plan ahead for any anticipated disruption to those we serve. Loud noises have the potential to startle those who may be sensitive to noise or vibration. Please be sure to check in with patients, clients, and residents and let them know of the additional noises and what this is they are hearing or sensing.



Based on how sound travels around building structures, this noise may be heard inside the entire Wausau Campus, especially in the Crisis and BHS areas, as well as the MVCC Buildings, parking lots, and throughout the neighborhood.

WAUSAU CAMPUS PARKING LOT REQUIREMENTS - PLEASE READ!

Please Do Not Change Parking Lots

Over the next several weeks, several departments on the Wausau Campus will be relocating. This means that staff may use different doors to access a closer route to their new location. This can affect parking. With our rear lot currently under construction, **we ask that all staff continue to park in the parking spaces they currently park in, even after your department relocates.** This may mean a slightly longer walk for some, but for others, it may not. What it will ensure is that those visiting our Campus for services will still have parking available. Please do not change where you park and continue to park in the same areas you have been. Once the rear parking lot is complete in the next month or so, we will have ample close parking for staff to park in the rear lot with additional designated parking for the various departments.



NCHC STAFF FALL VACCINATION SURVEY

Help Us Order the Appropriate Amount of Vaccine By Taking This 1-Minute Survey

Please take a minute of your day to complete this anonymous, short, one-question survey regarding our upcoming fall vaccinations beginning in October. The survey should take less than one minute to complete. **This survey is anonymous. No personal information is being collected- just responses for those wanting vaccinations, and those that do not want vaccinations.** COVID vaccines are no longer provided free to our organization and are very expensive per dose. This survey will help NCHC accurately order the correct number of vaccine doses so there is no waste of money or vaccine doses.

Survey is available at:

<https://forms.gle/oVmbvUa56gNkMynL8>

Please complete the survey by August 31 or sooner. Your participation is appreciated and helps our Infection Prevention Team with planning this fall.



We want MORE Awesome People like YOU on Our NCHC Team!

Be sure to SHARE our Career Posts on Social!



HARD HAT UPDATE

NCHC WAUSAU CAMPUS REAR PARKING LOT H / LOADING DOCK ENTRANCE BEGINNING AUGUST 16 Tunnel Work to Last Approximately 1 Week (Weather Dependent)

Beginning August 16 (approx.) additional work will be done on the tunnel that connects the main Campus to the Lake View Professional Plaza. This work will be closest to the main Campus building and require the current blacktop driveway to the new Loading Dock to be rerouted through the Demolition Zone (noted on map near Lot H). It will be necessary to block off additional parking spots for delivery vehicles to adjust their approach in Lot H to the new loading dock at Door 52. Please use caution when parking in Lot H and do not park in spaces blocked off for delivery vehicle maneuvering. Facilities vehicles that were parked in this area, will be relocated to a different area in Lot H.

North Central Health Care
Wausau Campus

- A** NCHC Main Campus Entrance (Door 23)
- B** Administration Offices
- C** Outpatient Services / Day Treatment
- D** Community Treatment (Main Office)
- E** Aquatic Therapy Center (Suite C)
- F** Marathon County Health Department
- G** Employee Health & Wellness Center
- H** Social Services

- I** Mount View Care Center Main Entrance (Suite B - All Visitors Entrance)
- J** The Bistro & Gift Shop
- K** MVCC Administration Offices
- L** Physical Therapy Center
- M** Community Room
- N** Mount View Courtyard
- O** Volunteer Services

- P** Suite A: Door 1 - Elevator Open to 2 South
- R** 1st Floor (Under Construction) CLOSED
2 South (2nd Floor - Enter At Door 1: Suite A or Door 5 - Use elevator)
2 North (2nd Floor - Construction - CLOSED)

- S** Adult Behavioral Health Hospital (Floor 1)
- T** Crisis Center (Door 58)
- U** Adult Crisis Stabilization (2370 Marshall)
- V** Youth Crisis Stabilization (2370 Marshall)
- W** Youth Behavioral Health Hospital (2380 Marshall)

- HR** Human Resources
- TR** Transportation & Housekeeping Offices
- P** Purchasing
- C** Cashier
- Rx** Pharmacy
- EC** Employee Cafeteria
- FB** Fashion Boutique

Construction Zone - No Access



WAUSAU CAMPUS DOORS AND BADGING SYSTEM NOTICE

Several areas across the Wausau Campus have been experiencing ongoing, intermittent issues with badge readers for doors. In many cases, our Quality & Safety Manager will be able to address the issue immediately, without creating a formal Facility Dude request, which may take a few hours or days to address.

If you are experiencing an issue with a badge reader at a door, please take the following steps:

1. Take note of the following details:
 - the name of the employee who was attempting to badge in
 - date and time of day
 - specific door number you are trying to enter/exit with badge reader
2. Contact Sarah Rothmeyer in Quality & Safety at trothmeyer@norcen.org or 715.848.4579. Sarah is able to access the system to trouble-

shoot and fix any issues which may have come up.

3. If Sarah cannot address the issue, a Facility Dude Request will be placed by Sarah that includes the needed details for a quicker response from the Facilities team.

We are hoping this process will reduce the response time it takes to address badge reader issues and also streamline Facility Dude requests to include the necessary details.



North Central Health Care
Person centered. Outcome focused.

Aspirus Clinics Sports Physicals

Aspirus Employee Health & Wellness Center
Marathon County
1000 Lake View Drive, Suite 200
North Central Health Care Campus, Door 34
Wausau, WI 54403



Theresa Micke, PA-C
Physician Assistant

Clinic Hours

Monday, Wednesday and Friday
8:00 am - 4:30 pm
Tuesday
6:30 am - 3:00 pm
Thursday
9:30 am - 6:00 pm

This service is available at no cost to those employees and dependents enrolled in the North Central Health Care Insurance Plan.

Schedule your appointment by calling
715.843.1256

Aspirus Business Health



Walk for Suicide & Mental Health Awareness

prevent suicide
MARATHON COUNTY
PARTNERS SAVING LIVES IN WISCONSIN

Saturday, September 16, 2023
Marathon Park, Wausau

Sign-In: 9:00 am
Walk Begins: 10:00 am

All funds raised at this event will be used for the needs of the people of Marathon County and the surrounding area!



Information/Registration:
preventsuicidemarathoncounty.org
Register by September 1 to receive t-shirt

August 2023 Organizational Learning Modules



Each month staff are assigned 30-60 minutes of organizational training that needs to be completed by the due date.

Log into the learning management system (LMS), *UKG Pro Learning*, to complete the following training modules:

- **Understanding Diversity, Equity and Inclusion** (15 minutes)
- **Complete any outstanding assignments**

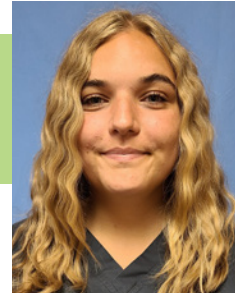
North Central Health Care
Person centered. Outcome focused.



employees on the move

Congratulations to these employees for their recent transfer or promotion!

Emily Houle transferred from Dietary Aide under the supervision of Kristy Lemmer to CNA at Mt View Care Center under the supervision of Kelly Roe effective 8/6/2023.



congrats!

HRinsights

Position Posting

Title: Community Treatment Technician

Status: Full Time

Location: Wausau

The Community Treatment Technician provides support and psychosocial rehabilitation services to consumers, youth or adults, enrolled in a Community Treatment. Services are provided in the home or community and may include side by side support with independent living skills, budgeting, social skills, groups facilitation and medication management. Population served includes individuals with a mental health and/or substance abuse diagnosis. Pay - \$16.25-\$18.00/Hour



Apply Online: <https://bit.ly/CommTech23>

Looking for the Right Fit?

Check out the Realistic Job Preview Video at

www.norcen.org/RJP

REFER A FRIEND EARN UP TO ~~\$500~~ \$1,000

Here's how it works...

Step 1: Have Your Recruit Tell Us About You

Complete the "Referred by" section in their employment application including your name. No other forms or email are necessary.

Step 2: Meet Required Criteria

You and your recruit must be in good standing throughout this period and have no written warnings for attendance or other performance.

Step 3: Get Paid!

When your recruit joins the NCHC Team, and you both have met the referral requirements YOU will earn the following:

- \$1,000** After 90 days (Employees 0.5 FTE status or above)
- \$500** After 90 days (Employees below 0.5 FTE status)

Refer A Friend For Your Opportunity To Earn Referral Cash!

We value your referrals and know that together we can strengthen our North Central Health Care team. That's why earning some extra cash for your employee referrals has never been simpler. So text that friend, and get the ball rolling.

*For additional details and qualification requirements please refer to the Referral Bonus Policy.



North Central Health Care
Person centered. Outcome focused.

Check out all the latest Job Opportunities
www.norcen.org/Careers

Share on Social!



DID YOU MISS THE 2ND QUARTER EMPLOYEE UPDATES?

Don't Worry - We've Got You Covered with a Recorded Version!

If you missed the second quarter Update Sessions, you can still catch up on what's new at North Central Health Care and what exciting goals we have on the horizon. Simply check out the 2nd Quarter recorded session and stay informed!

<https://www.youtube.com/watch?v=LecAc9YHwi0>





WHAT'S FOR LUNCH?

WAUSAU CAMPUS EMPLOYEE CAFETERIA
OPEN TO ALL NCHC & WAUSAU CAMPUS



BREAKFAST HOURS

8:30 AM – 11 AM

LUNCH HOURS

MONDAY – FRIDAY
11:30 AM – 1:30 PM
HOT FOOD BAR
\$.45/OUNCE
(Weekdays Only)

GRAB-N-GO HOURS

MONDAY – FRIDAY
8:30 AM – 5:30 PM

WEEKENDS:

GRAB-N-GO ONLY

THE SANDWICH & SALAD BAR IS BACK!

Make your own cold sandwich with lunch meat & fixins' OR self-serve at the salad bar. Salads are charged by weight.

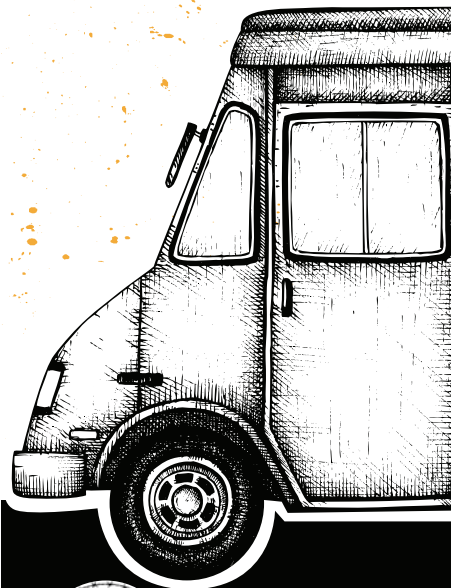
AUGUST 14 – 18, 2023

	MONDAY	TUESDAY	WEDS	THURSDAY	FRIDAY
MAIN	Bratwurst on a Bun Potato Salad Creamy Cucumber Salad	Honey Mustard Chicken Rice Pilaf Beets	Pork Loin with Gravy O'brien Potatoes Mixed Veggies	Mac & Cheese with Ham Green Beans	Chicken Lasagna Broccoli
SOUP	Chicken Rice Soup	TBD	Homemade Chili	Taco Soup	Cream of Broccoli Soup
DESSERT	Diced Watermelon	Frosted Chocolate Cake	Strawberry Yogurt Pie	Fruit Cobbler	Fruit Cobbler

AUGUST 21 – 25, 2023

	MONDAY	TUESDAY	WEDS	THURSDAY	FRIDAY
MAIN	Baked Chicken Drumstick Mashed Potatoes Parslied Carrots	Chicken Pasta Alfredo Beets Breadstick	Smoked Pork Loin Baked Sweet Potato Buttered Peas	Ranch Meatloaf Baked Potato Wax Beans	Battered Rock Fish Country Style Fried Potatoes Creamy Coleslaw
SOUP	TBD	TBD	TBD	Beef Vegetable Soup	Vegetable Chowder
DESSERT	Mandarin Oranges	Peanut Butter Chip Blondie	Fruit Crisp	Diced Watermelon	Cherry Crunch

WAUSAU CAMPUS SUMMER FOOD TRUCKS



Mitch's Texas Tacos

Weekly on Thursdays*

Through August 31 at Mount View



10:30 am to 1:30 pm

Mount View Care Center Entrance

HANUMAN EXPRESS

Monthly on Fridays*

Aug 18 at Mount View



10:30 am to 2:30 pm

Employee Entrance

BB Kitchen

Monday, Sept. 18

Authentic Thai at Pine Crest

* Dates are subject to change. Watch for notices via email and NYCU.

Please note: Food trucks are independently operated and may cancel with little notice. We apologize for any inconvenience.



THE BISTRO

MONDAY - FRIDAY | 7:30AM - 3PM
HOT FOOD AVAILABLE UNTIL 2:30PM

PANINI OF THE WEEK



CAPRESE PANINI

MOZZARELLA | SPINACH | TOMATO
BASIL | ITALIAN DRESSING

LATTE OF THE WEEK



Hazelnut Mocha

**\$1 OFF LARGE
LATTES EVERY
MONDAY!**

Ice Cream

- ICE CREAM CONE1.00
- ROOT BEER FLOAT2.00



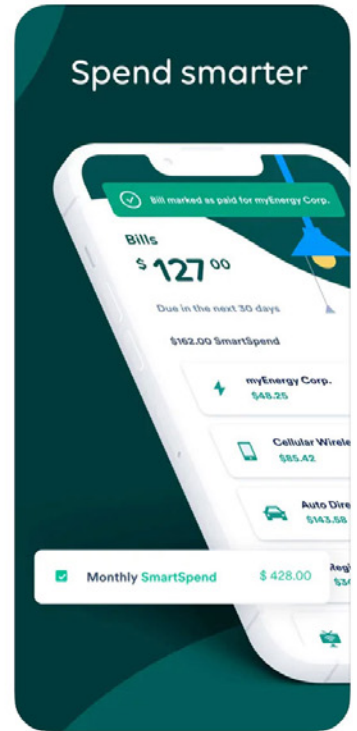
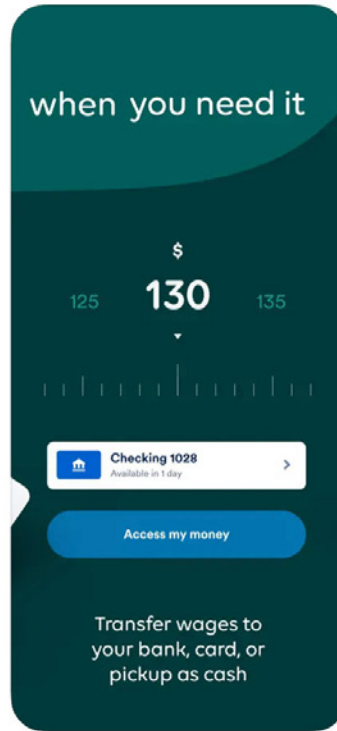
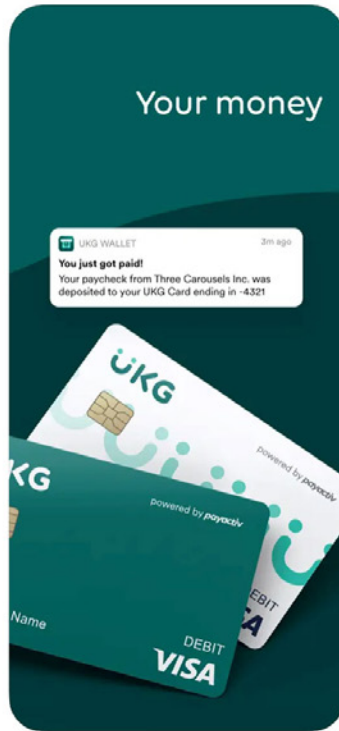
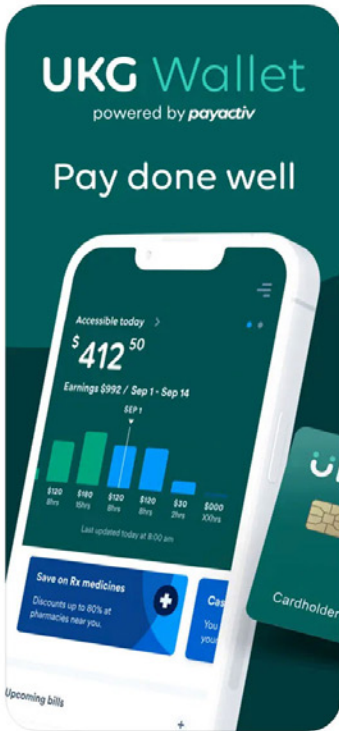
LUNCH

- PANINI COMBO (1/2 PANINI, CHIPS, WATER)5.00
- TURKEY BACON GUAC PANINI6.00
- TURKEY BACON GUAC WRAP5.75
- 3 CHEESE PANINI (ADD CHICKEN FOR \$1)3.50
- GRILLED HAM & CHEESE PANINI 4.50
- GARLIC BACON PANINI 5.00
- CHICKEN BACON RANCH WRAP5.25
- CHEESE QUESADILLA (ADD CHICKEN FOR \$1)4.50
- CALZONE 4.50/5.00
- CHEF SALAD/CHICKEN SALAD5.50

**Please note: All sales subject to Sales Tax.*



AVAILABLE for ALL NCHC EMPLOYEES!



Your payday, reimagined



UKG has partnered with your employer to reinvent the way you get paid. Work your shift, and we'll make a portion of that money available, giving you more control over when and how you want to use it.

The funds you access simply get deducted from your next paycheck. It's not a loan, so there's no interest—just your money, in your hands.



You worked the hours—let's get you paid.
Learn more at ukg.com.

Visit
www.norcen.org/UKGWallet
for More Details & Instructions!

Pro Tip

Access your wages for free with direct deposit to a UKG Visa® Card*

* The UKG Visa Prepaid Card is issued by Central Bank of Kansas City, Member FDIC, pursuant to a license from Visa U.S.A. Inc. Certain fees, terms, and conditions are associated with the approval, maintenance, and use of the Card. You should consult your Cardholder Agreement and the Fee Schedule at payactiv.com/card411. If you have questions regarding the Card or such fees, terms, and conditions, you can contact us toll free at 1 (877) 747-5862, 24 hours a day, 7 days a week.